



House area 246m² | Lot 13 | Size 665m²

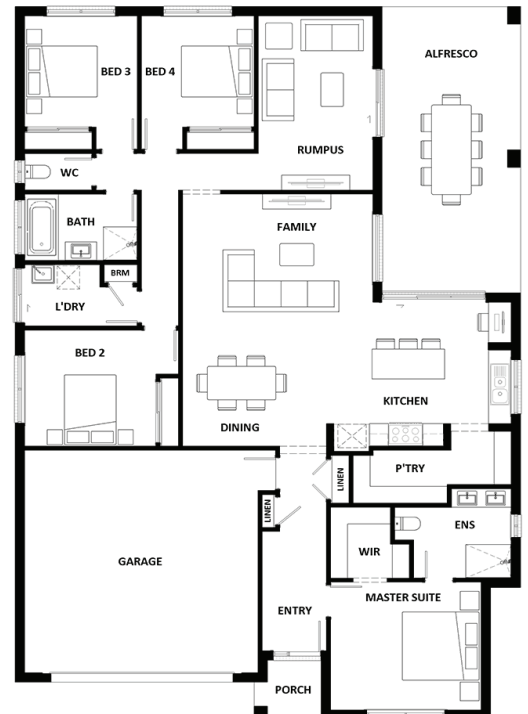


Starting from

\$534,250

Key Features

- Single Storey home with 4 spacious built-in bedrooms, open plan Kitchen/Family/Dining Area opening onto the massive Alfresco Area, Separate Rumpus Room
- Ceiling Fans throughout
- Carpet & Tiles throughout
- Flyscreens throughout and a dishwasher
- Façade options available



Matt Bruggemann

M 0407 424 692

E matthew@pointglen.com.au

POINTGLEN