



House area 219m<sup>2</sup> | Lot 21 | Size 722m<sup>2</sup>

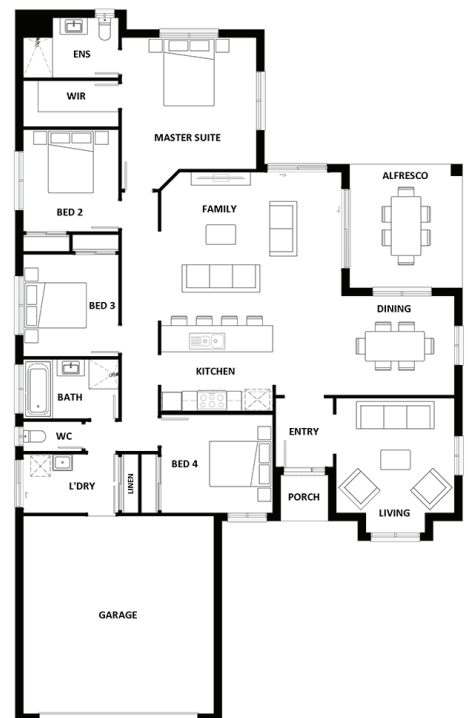
4 2 2

Starting from

# \$518,500

### Key Features

- Single Storey home with 4 spacious built-in bedrooms, open plan Kitchen/Family/Dining Area opening onto the Alfresco Area, Separate Formal Living room and ample storage throughout
- Exposed Aggregate Driveway allowance
- Letterbox & Clothesline
- Façade options available



**Matt Bruggemann**

M 0407 424 692

E matthew@pointglen.com.au

**POINTGLEN**