



House area 274m² | Lot 49 | Size 725m²

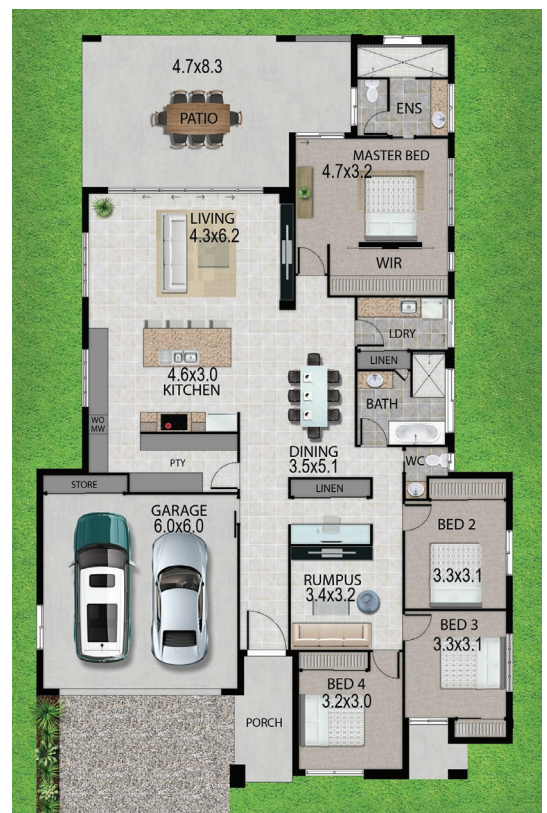
4 2 2

Starting from

\$516,800

Key Features

- Open plan living
- Walk in pantry
- Spacious Master Bedroom
- Large alfresco area
- Separate rumpus room



Matt Bruggemann

M 0407 424 692

E matthew@pointglen.com.au

POINTGLEN