



House area 241m² | Lot 62 | Size 685m²

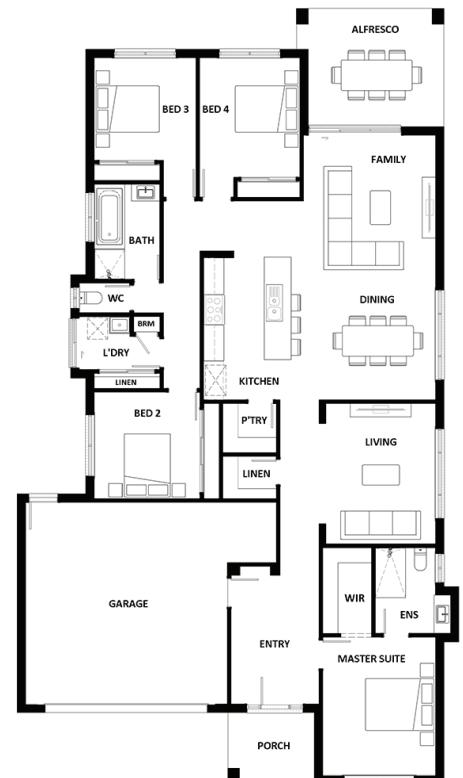


Starting from

\$526,100

Key Features

- Single Storey home with 4 built-in bedrooms, open plan Kitchen/Family/Dining Area opening onto the Alfresco Area & Seperate Living Room
- Exposed Aggregate Driveway allowance
- Letterbox & Clothesline
- Ample storage throughout
- Façade options available



Matt Bruggemann

M 0407 424 692

E matthew@pointglen.com.au

POINTGLEN