



House area 209m² | Lot 9 | Size 676m²

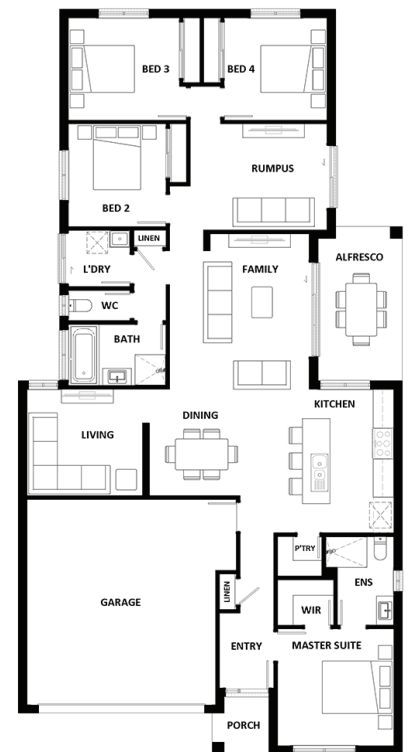


Starting from

\$508,300

Key Features

- Single Storey home with 4 spacious built-in bedrooms, open plan Kitchen/Family/Dining Area opening onto the Alfresco Area, Separate Rumpus Room and Separate Formal Living Area
- Exposed Aggregate Driveway allowance
- Letterbox & Clothesline
- Façade options available



Matt Bruggemann

M 0407 424 692

E matthew@pointglen.com.au

POINTGLEN